



# Ryecroft C.E. (C) Middle School

## Year 7 Catch-Up Premium Expenditure:

### Report 2015/16

---

*“Year 7 pupils who receive extra help from the catch-up premium make good progress in English and narrow the gap between their attainment and that of other pupils”*

Ofsted 2013

### What is Catch-Up Premium?

Year 7 Catch-Up Premium is additional funding to the main school funding. It is received from the government and is allocated to schools for each Year 7 pupil who did not achieve at least level 4 in the Key Stage 2 national curriculum tests in reading and/or mathematics.

### Purpose of the Funding

Funding is not ring-fenced and schools are free to spend the Catch-Up Premium as they see fit within specific parameters.

The purpose of this funding is to enable schools to deliver additional literacy and numeracy catch-up support, such as individual tuition or intensive valuable support in small groups, for those pupils that most need it. This enables those pupils that did not achieve level 4 in reading and/or mathematics at Key Stage 2 to be given the opportunity to catch up as quickly as possible so that they are more likely to succeed at secondary school.

### How will we be spending the additional funding?

The Year 7 Catch-Up Premium at Ryecroft C.E. (C) Middle School is used to pay for a range of student support activities and interventions. In 2015-2016 a total of £6,000 was awarded to Ryecroft C.E. (C) Middle School for supporting students with low prior attainment at Key Stage 2. The strategies employed during the academic year included:

#### **Staffing support to enable:**

- In-class support for literacy and numeracy and extra TA time allocation to support students in English and Mathematics lessons
- Increased contact time and improve the ratios of qualified teachers to pupils in the key areas of English and Maths. This enables all students to be taught in smaller classes and thus provides all teachers of English and Maths with more opportunities for one to one or small group support and intervention. *Sutton Trust reports impact to be: Effective feedback +8months, one-to-one tuition +5 months, reducing class size +3 months.*
- Nurture groups to target literacy for vulnerable, below target SEN, Catch-Up and Pupil Premium students.

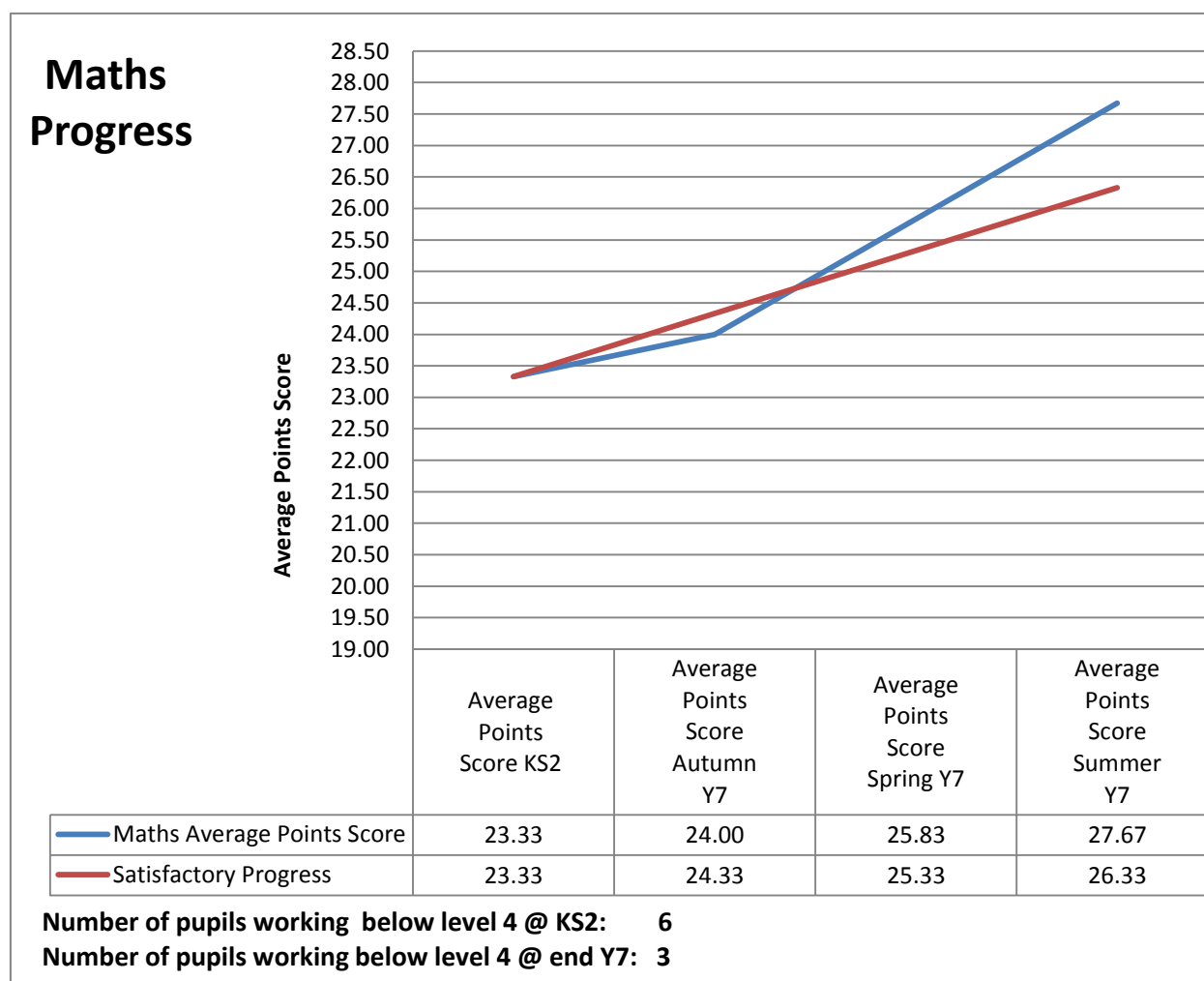
- Investment in the provision of pastoral and emotional support. This included utilising our Nurture Group provision and YESS, a Youth Counselling service. This enabled pupils to better cope with home and educational issues and therefore focus on maximising their learning. *Sutton Trust reports impact to be: Behaviour Intervention +4 months, parental involvement +3 months, mentoring +3 months.*
- Homework Club
- Literacy intervention programme includes using the following:
  - Accelerated Reader Programme incorporating the STAR Reading assessment

**Purchase of:**

- Assistive technology for Literacy and Numeracy
- Physical classroom resources and targeted text books
- Reading materials to ensure structured progression
- Accelerated reader
- Purchase Non Fiction low level Accelerated Reading Books

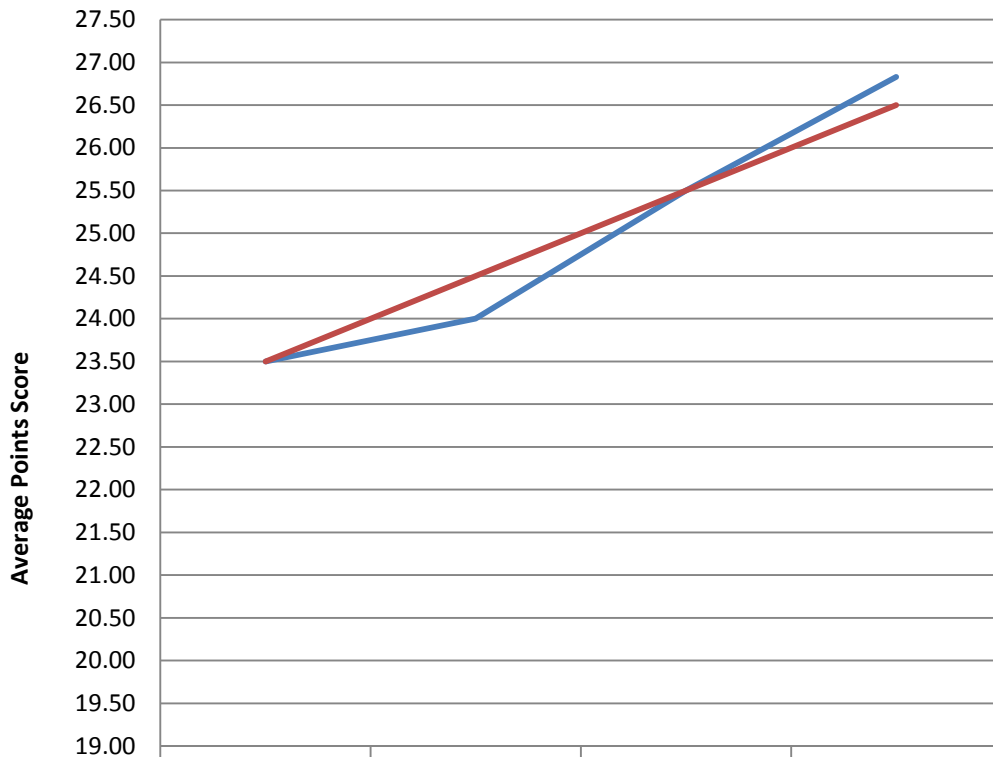
## Impact

At Ryecroft C.E. (C) Middle School pupil progress is continually monitored and assessed. The impact of our rigorous monitoring system enables us to provide intensive support and implement strategies at an early stage **to all pupils** who are not making the expected level of progress or better.



**Number of pupils working below level 4 @ KS2: 6**  
**Number of pupils working below level 4 @ end Y7: 3**

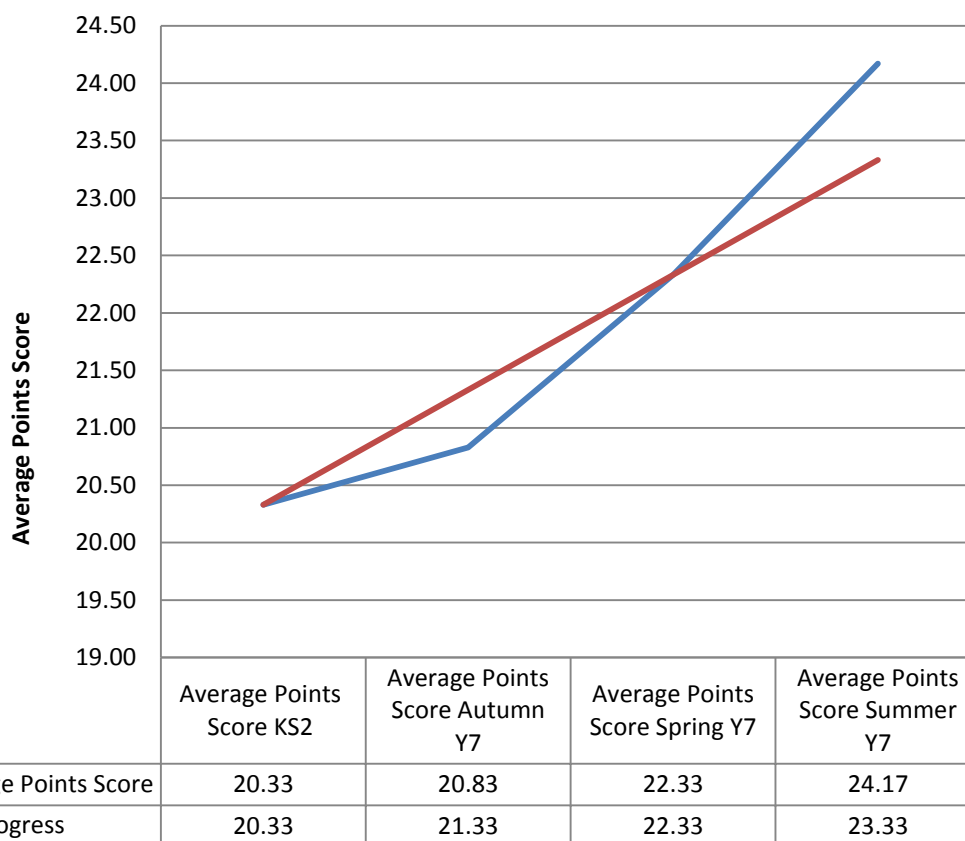
## Reading Progress



	Average Points Score KS2	Average Points Score Autumn Y7	Average Points Score Spring Y7	Average Points Score Summer Y7
Reading Average Points Score	23.50	24.00	25.50	26.83
Satisfactory Progress	23.50	24.50	25.50	26.50

Number of pupils working below level 4 @ KS2: 4  
 Number of pupils working below level 4 @ end Y7: 2

## Writing Progress



**Number of pupils working below level 4 @ KS2: 11**

**Number of pupils working below level 4 @ end Y7: 2**

## Future Plans for Academic Year 2016/2017

Similar spending plans to 2015-16 are already in place to ensure our students that came in sub level four are able to make the expected progress.

Reading will continue to take place as part of form time and with designated teaching assistants during allocated sessions throughout the week. The implementation and development of the Accelerated Reading programme will aid teacher assessment of reading attainment. We hope to inspire pupils to want to read and hopefully to enjoy it whilst raising reading and literacy skills across the curriculum.

Train two members of staff to become a Level 3 Forest School practitioner and to develop an on-site Forest School provision. The aim of the programme is for pupils to develop resilience and confidence, moving towards a growth mindset, where they see every challenge as a learning experience *Sutton Trust reports impact to be: Meta Cognition and Self-Regulation +8, Mentoring +1, Outdoor adventure learning +3*

The current year 8 pupils will continue to access the support required at an individual level in numeracy and literacy.

## Record of spending by item/project for 2015/2016

Item/project	Cost
Additional Teaching Assistant Support	£ 6,753.60
Resources	£ 159.80
Staff Training	£ 1,800.00
Alfie soft – assessment & tracking programme	£ 295.00
Accelerated Reader (proportionate cost of programme)	£ 1,000.00
<b>Total Expenditure for 2015/2016</b>	<b>£ 10,008.40</b>
<b>Total Amount Received for 2015/2016</b>	<b>£ 6,000.00</b>

The above is an account of expenditure already incurred and of known future expenditure. It is therefore anticipated that total expenditure for 2015/2016 will exceed this and, exceed the amount received.